



SBC
Orlando
Venue: Orange County Conv. Ctr
City: Orlando
Dates: 6/7-6/10/2025
Contact:

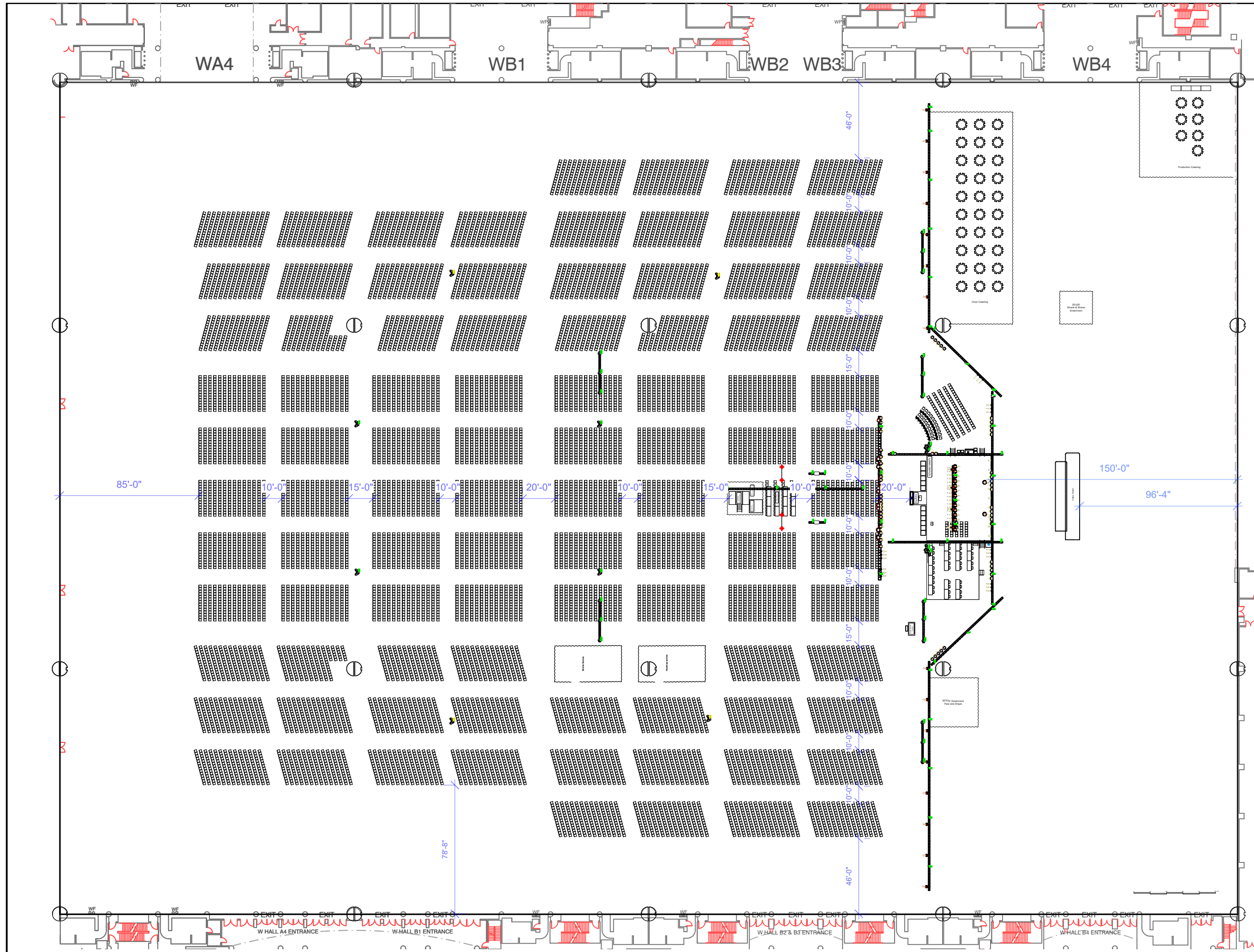
Rev: **Rev # 8** Updated: **5/19/26**
Scale: **As Noted**
Plate #: **Large - 0 of 8**
Plate Title: **Cover Sheet**
Drawn By: **Stephen "Red" Shumate**

Notes:

Stamp:
Date: **5/19/26**
Time: **8:18:28 AM**
File name: **SBC Orlando 2026 R8**

Show Manager:
Production Manager:





SBC
Orlando

Venue:
Orange County Conv. Ctr

City:
Orlando

Dates:
6/7-6/10/2025

Contact:

Rev # 8 Updated: 5/19/26

Scale:
As Noted

Plate #
Large - 1 of 8

Plate Title:
Overall

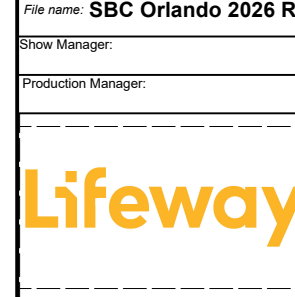
Drawn By:
Stephen "Red" Shumate

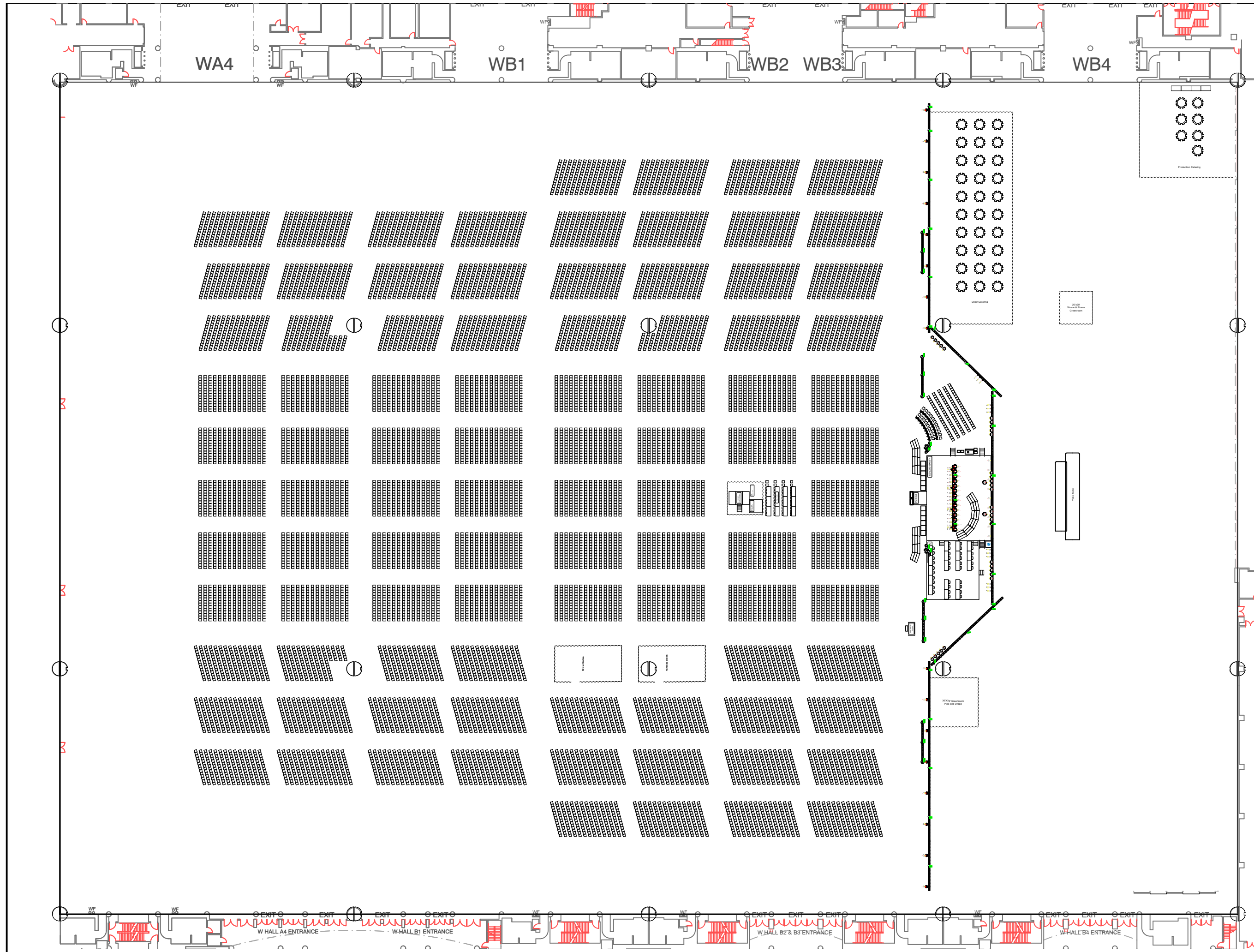
Notes:

Stamp:
Date: 5/19/26
Time: 8:19:18 AM
File name: SBC Orlando 2026 R8

Show Manager:

Production Manager:





SBC
Orlando

Venue:
Orange County Conv. Ctr

City:
Orlando

Dates:
6/7-6/10/2025

Contact:

Rev: **Rev # 8** Updated: **5/19/26**

Scale: **As Noted**

Plate #: **Large - 2 of 8**

Plate Title: **Seating**

Drawn By: **Stephen "Red" Shumate**

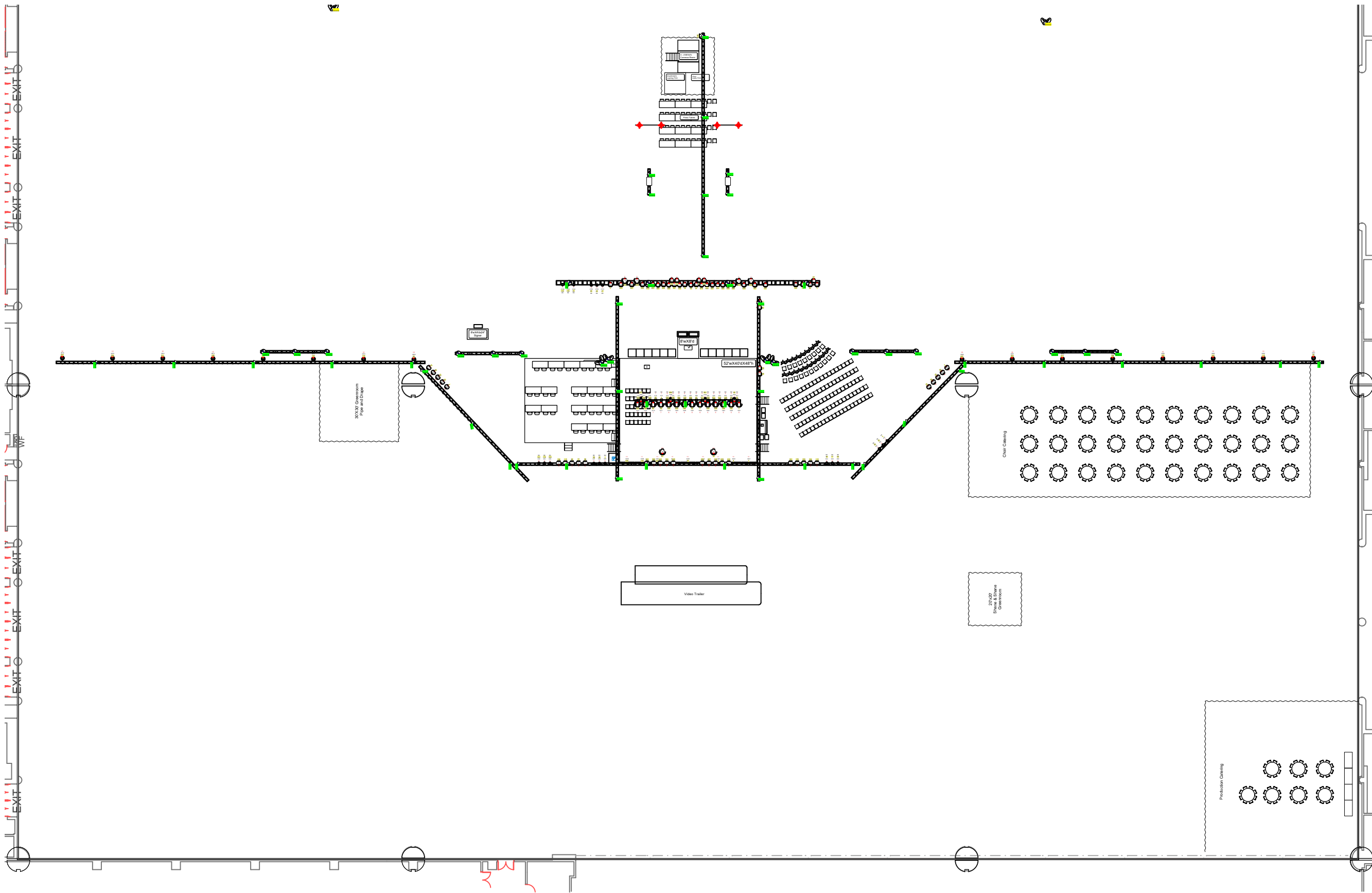
Notes:
Total Number of Chairs: 16,449

Stamp:
Date: **5/19/26**
Time: **8:20:07 AM**
File name: **SBC Orlando 2026 R8**

Show Manager:

Production Manager:





SBC
Orlando

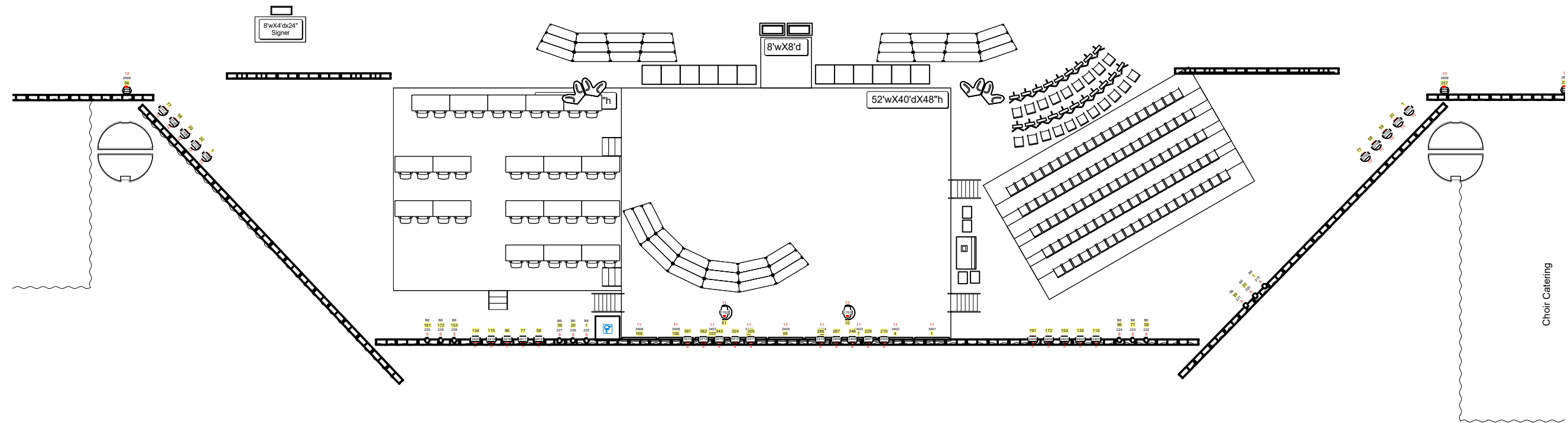
Venue: Orange County Conv. Ctr
City: Orlando
Dates: 6/7-6/10/2025
Contact:

Rev: **Rev # 8** Updated: 5/19/26
Scale: **As Noted**
Plate #: **Large - 3 of 8**
Plate Title: **Convention Production**
Drawn By: Stephen "Red" Shumate

Notes:

Stamp:
Date: **5/19/26**
Time: **8:20:57 AM**
File name: **SBC Orlando 2026 R8**
Show Manager:
Production Manager:





SBC
Orlando

Venue: Orange County Conv. Ctr
City: Orlando
Dates: 6/7-6/10/2025
Contact:

Rev: **Rev # 8** Updated: **5/19/26**

Scale: **As Noted**

Plate #: **Large - 4 of 8**
Plate Title: **PC Stage**

Drawn By: **Stephen "Red" Shumate**

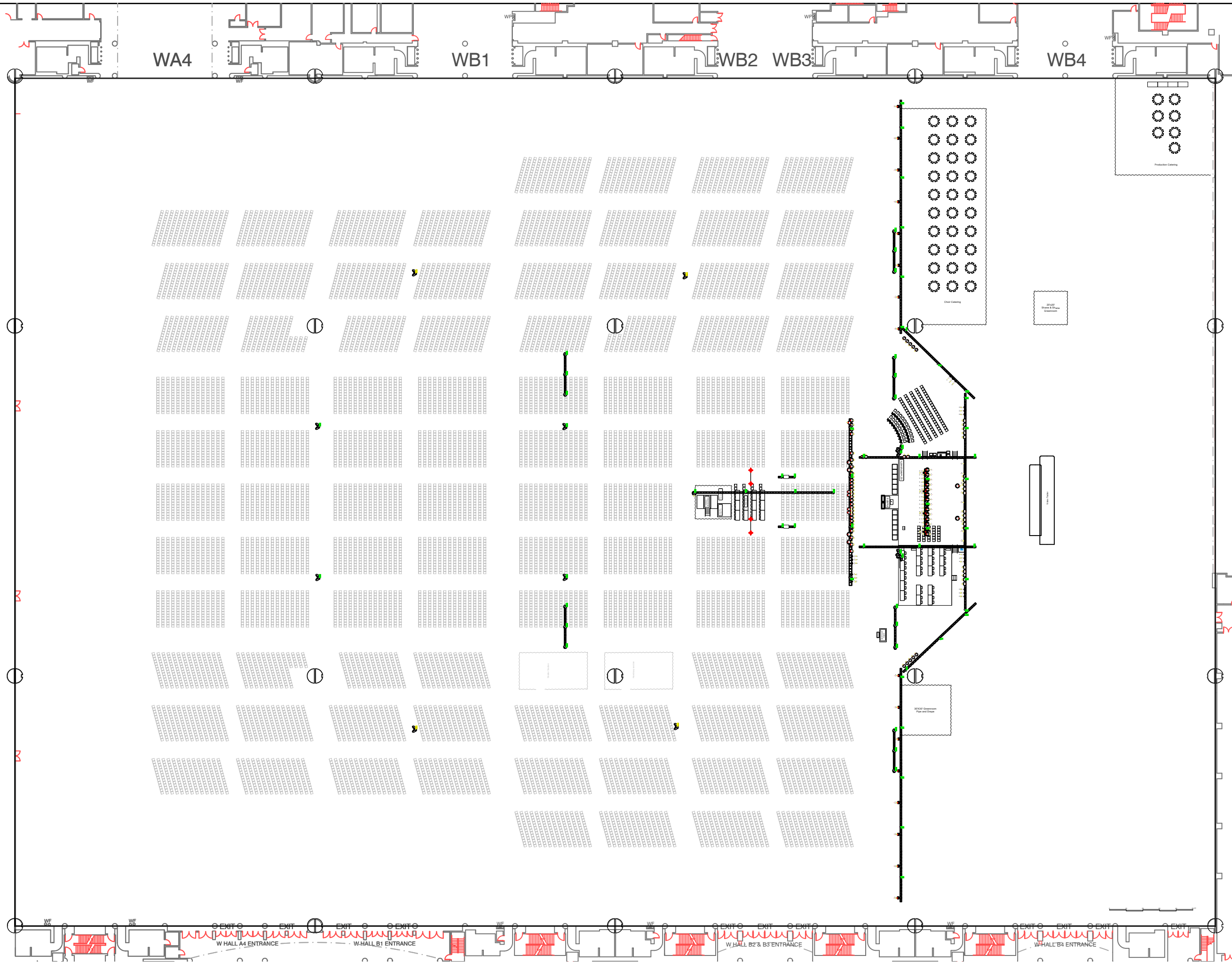
Notes:

Stamp:
Date: **5/19/26**
Time: **8:21:44 AM**
File name: **SBC Orlando 2026 R8**

Show Manager:

Production Manager:





SBC
Orlando

Venue:
Orange County Conv. Ctr

City:
Orlando

Dates:
6/7-6/10/2025

Contact:

Rev: **Rev # 8** Updated: **5/19/26**

Scale: **As Noted**

Plate #
Large - 5 of 8

Plate Title:
Flow Prod w chairs

Drawn By:
Stephen "Red" Shumate

Notes:

Stamp:

Date: **5/19/26**

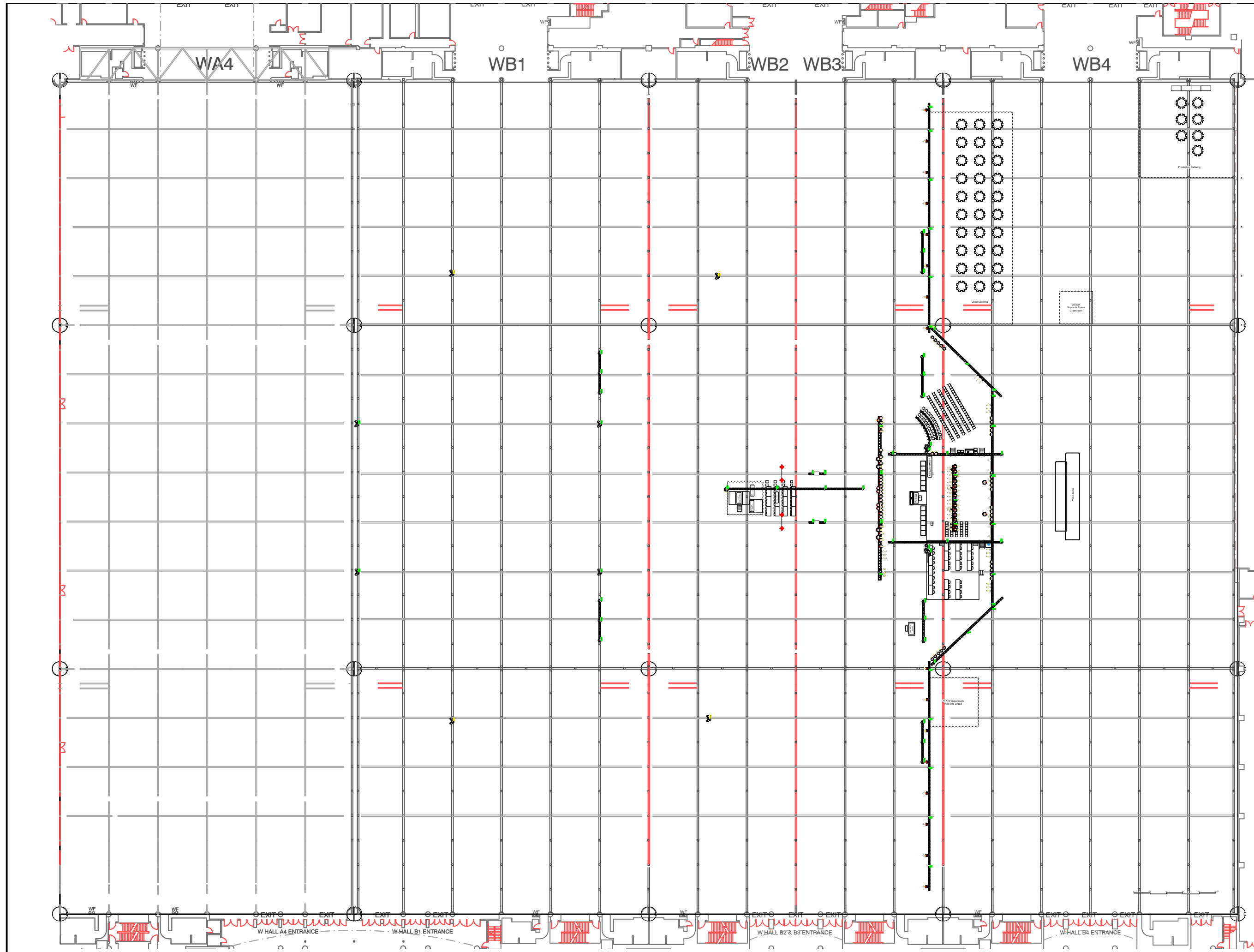
Time: **8:22:30 AM**

File name: **SBC Orlando 2026 R8**

Show Manager:

Production Manager:





SBC
Orlando

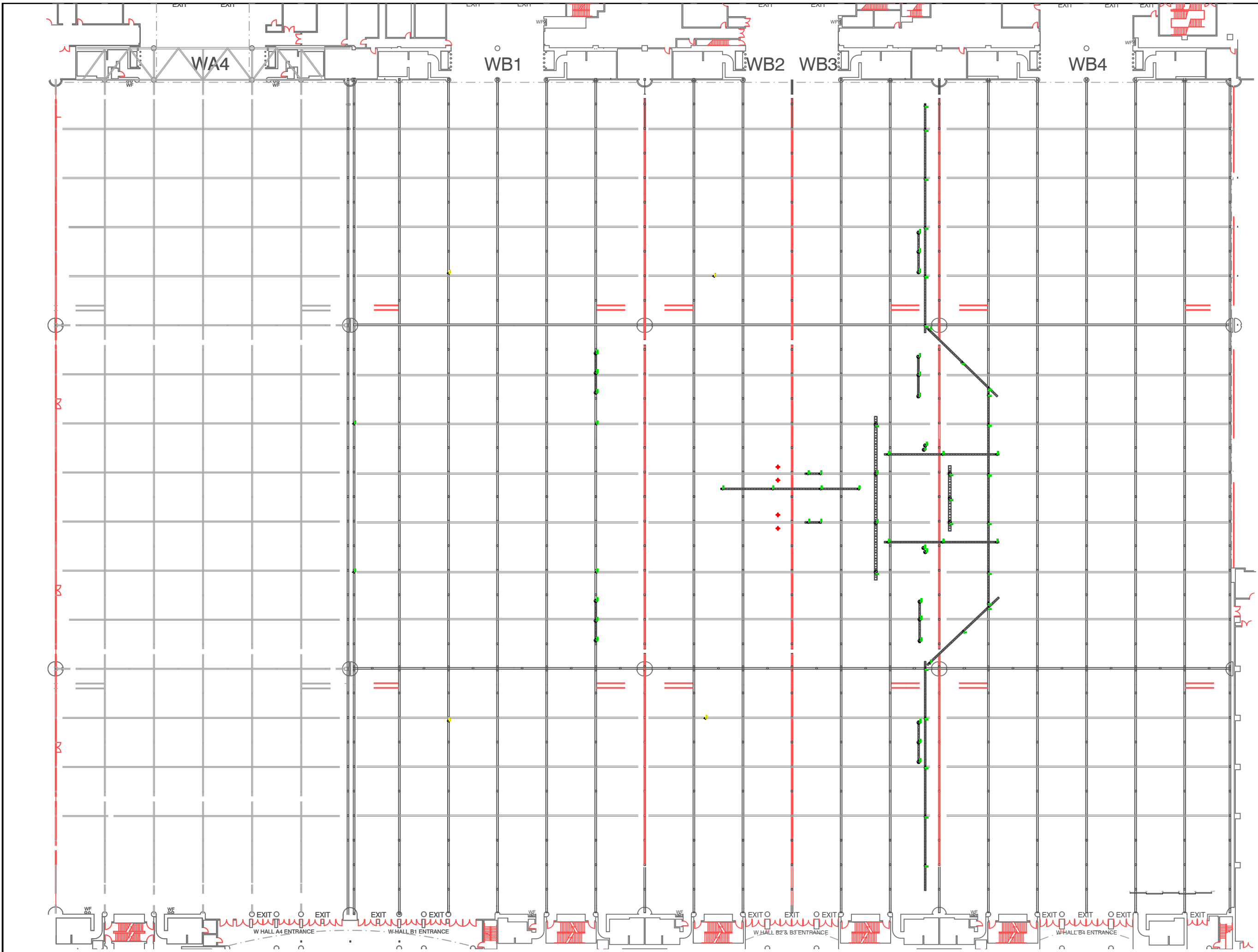
Venue: Orange County Conv. Ctr
City: Orlando
Dates: 6/7-6/10/2025
Contact:

Rev: **Rev # 8** Updated: 5/19/26
Scale: **As Noted**
Plate #: **Large - 6 of 8**
Title: **Flown Prod w Steel**
Drawn By: Stephen "Red" Shumate

Notes:

Stamp:
Date: **5/19/26**
Time: **8:23:21 AM**
File name: **SBC Orlando 2026 R8**
Show Manager:
Production Manager:





SBC
Orlando

Venue: Orange County Conv. Ctr

City: Orlando

Dates: 6/7-6/10/2025

Contact:

Rev: **Rev # 8** Updated: **5/19/26**

Scale: **As Noted**

Plate # **Large - 7 of 8**

Truss and Motors Only

Drawn By: **Stephen "Red" Shumate**

Notes:

Category	Item	Quantity
Motor	---	85

Category	Item	Quantity
Motor	1 Ton Blue	36
Motor	1/2 Ton Blue	45
Motor	Dead Hang	4

Category	Item	Quantity
Truss	12x12x8'	12
Truss	12x12x10'	89
Truss	20X20X10'	14

Stamp:

Date: **5/19/26**

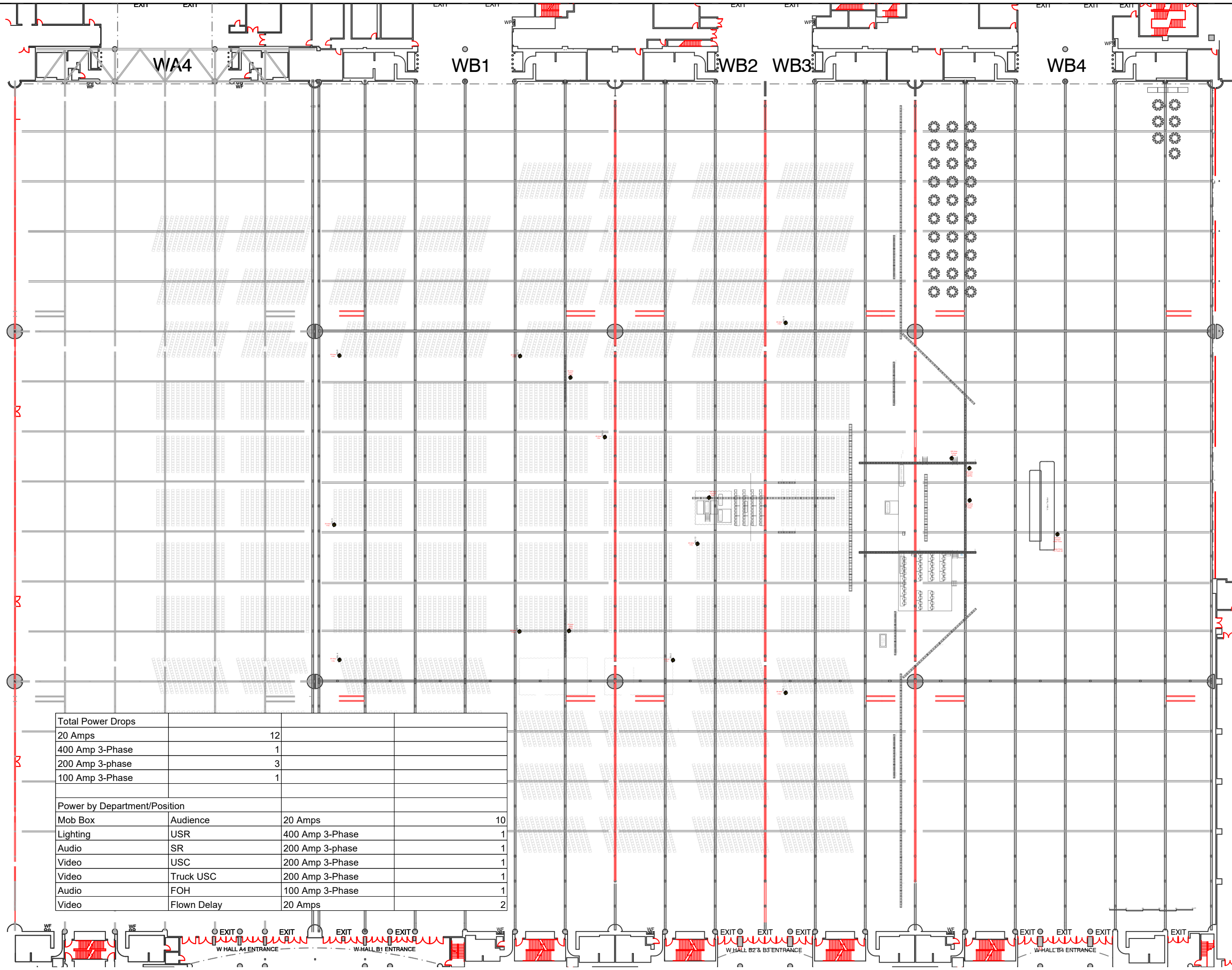
Time: **8:24:09 AM**

File name: **SBC Orlando 2026 R8**

Show Manager:

Production Manager:





Total Power Drops			
20 Amps			12
400 Amp 3-Phase			1
200 Amp 3-phase			3
100 Amp 3-Phase			1
Power by Department/Position			
Mob Box	Audience	20 Amps	10
Lighting	USR	400 Amp 3-Phase	1
Audio	SR	200 Amp 3-phase	1
Video	USC	200 Amp 3-Phase	1
Video	Truck USC	200 Amp 3-Phase	1
Audio	FOH	100 Amp 3-Phase	1
Video	Flown Delay	20 Amps	2

SBC
Orlando

Venue: Orange County Conv. Ctr
City: Orlando
Dates: 6/7-6/10/2025
Contact:

Rev: Rev # 8	Updated: 5/19/26
Scale: As Noted	
Plate #: Large - 8 of 8	
Plate Title: Power	
Drawn By: Stephen "Red" Shumate	
Notes:	

Stamp:
Date: **5/19/26**
Time: **8:24:57 AM**
File name: **SBC Orlando 2026 R8**

Show Manager:
Production Manager:

Lifeway